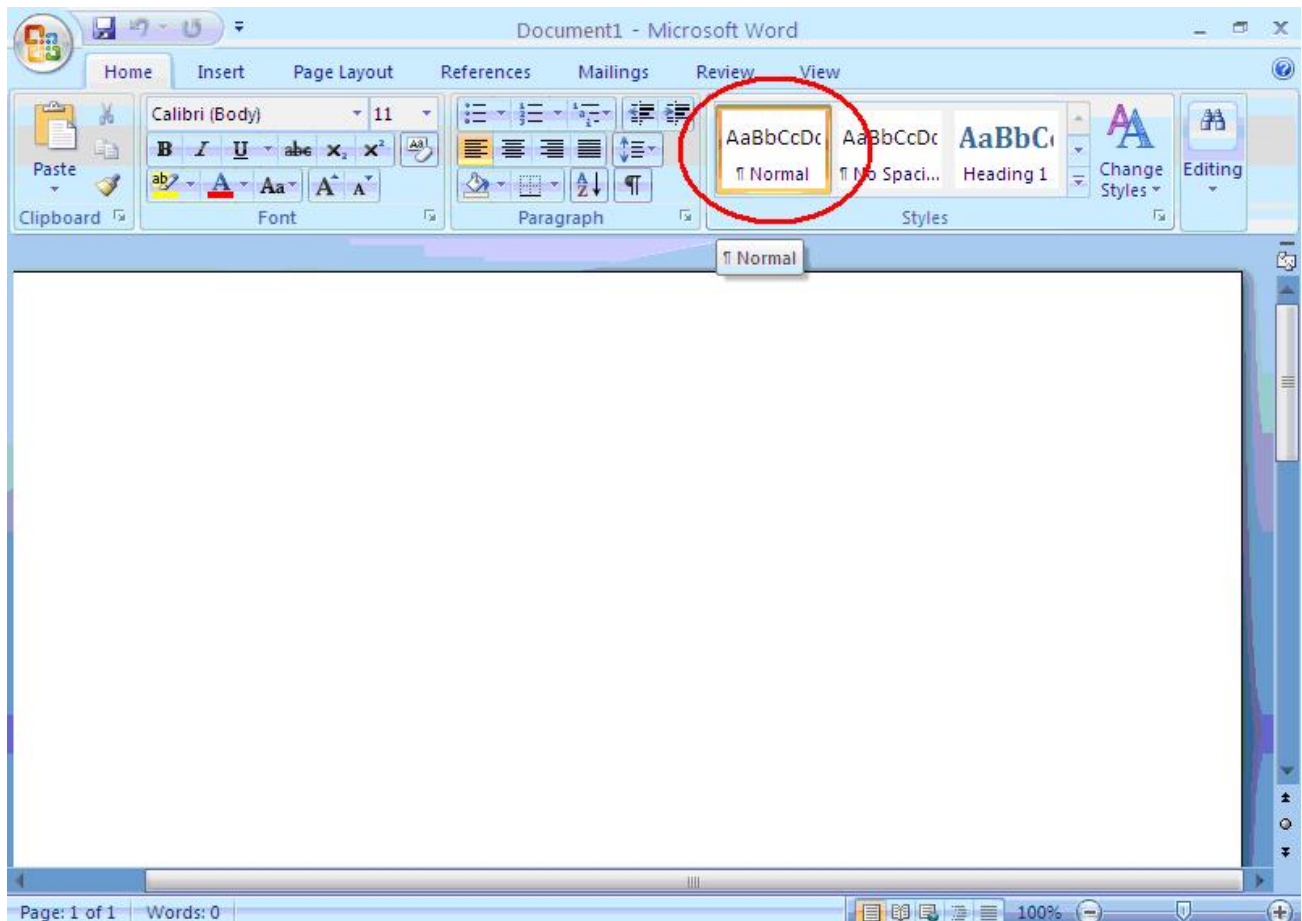


Microsoft Word Document settings

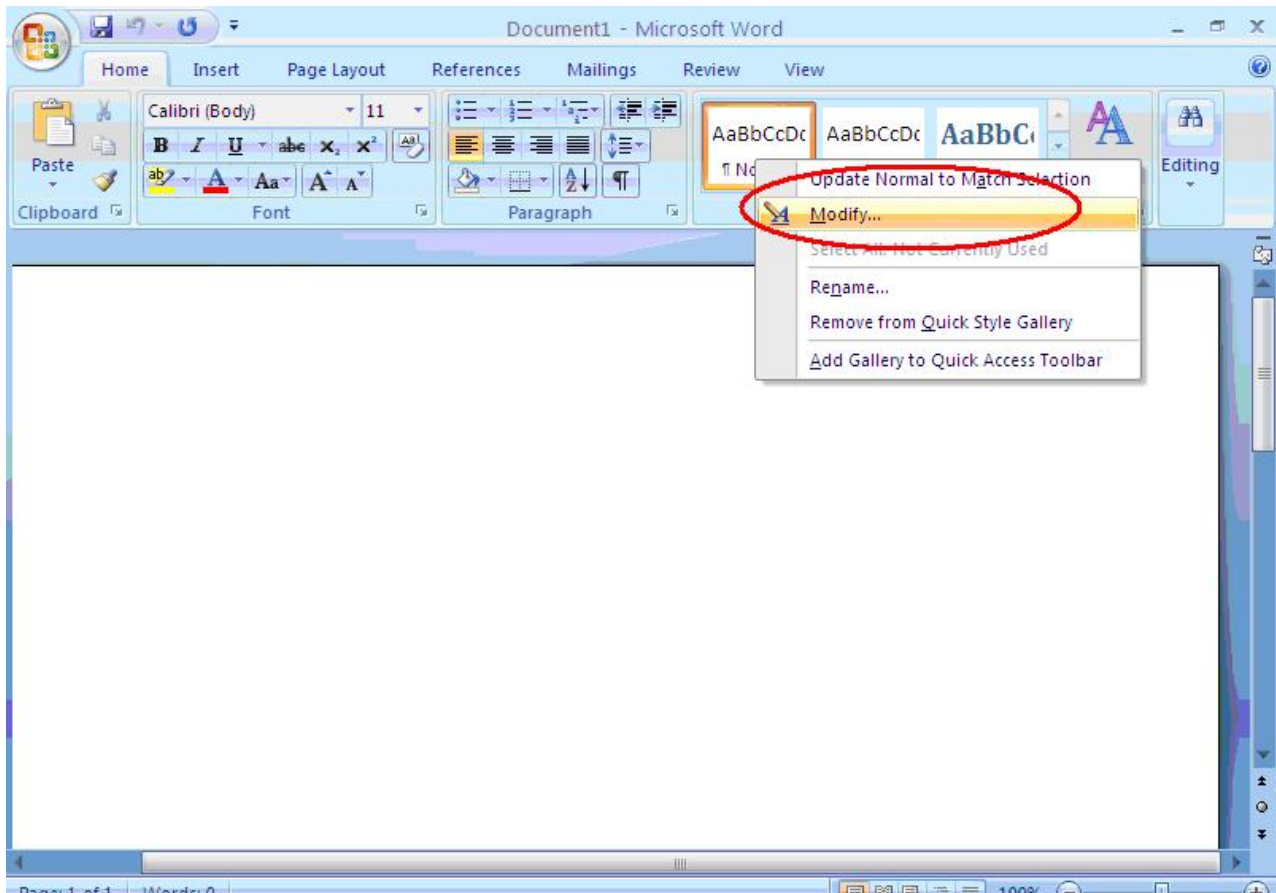
Due to some compatibility issue with Microsoft word document in office 2003 and 2007 and higher version equipment parameter and note/detail might not display proper (refer due to more line space some parameter will not display) in that case user has to set default setting of Microsoft word. To modify default setting of Microsoft word for compatibility please follows below steps.

| Menu Data | | | | | | | | |
|-----------|---------|---------|----------|---------|---------|---------|---------|----------|
| | ZERO | RANGE | VELO | DELAY | ZERO | RANGE | VELO | DELAY |
| | 2220 | 0100 MM | 5920 | 000.0MM | 2220 | 0100 MM | 5920 | 000.0MM |
| | GATE 1 | START | END | LEVEL | GATE 1 | START | END | LEVEL |
| | OFF | 030 % | 040 % | 040 % | OFF | 030 % | 040 % | 040 % |
| | GATE 2 | START | END | LEVEL | GATE 2 | START | END | LEVEL |
| | OFF | 040 % | 040 % | 050 % | OFF | 040 % | 040 % | 050 % |
| | MEM | MEMNO | ACTION | ENTER | MEM | MEMNO | ACTION | ENTER |
| | A SCAN | 004 | SAVE | | A SCAN | 004 | SAVE | |
| | REJECT | SET REF | VIDEO | MODE | REJECT | SET REF | VIDEO | MODE |
| | 000 % | OFF | ENVELOP | DUAL | 000 % | OFF | ENVELOP | DUAL |
| | CLOCK | COLOR | HORN | BRIGHT | CLOCK | COLOR | HORN | BRIGHT |
| | OFF | 005 | OFF | 050 % | OFF | 005 | OFF | 050 % |
| | DAC | CURSOR | POINT | PRESS | DAC | CURSOR | POINT | PRESS |
| | OFF | 030 % | 001 | ENTER | OFF | 030 % | 001 | ENTER |
| | MEASURE | X-OFF | ANGLE | THICK | MEASURE | X-OFF | ANGLE | THICK |
| 100 | OFF | 000.0 | 000 DEG | 100.0MM | OFF | 000.0 | 000 DEG | 100.0MM |
| | | HUD | BEEP | | | HUD | BEEP | |
| | | OFF | ON | | | OFF | ON | |
| | Gain | 30.0 dB | REF 25.0 | Tm: | | Gain | 30.0 dB | REF 25.0 |

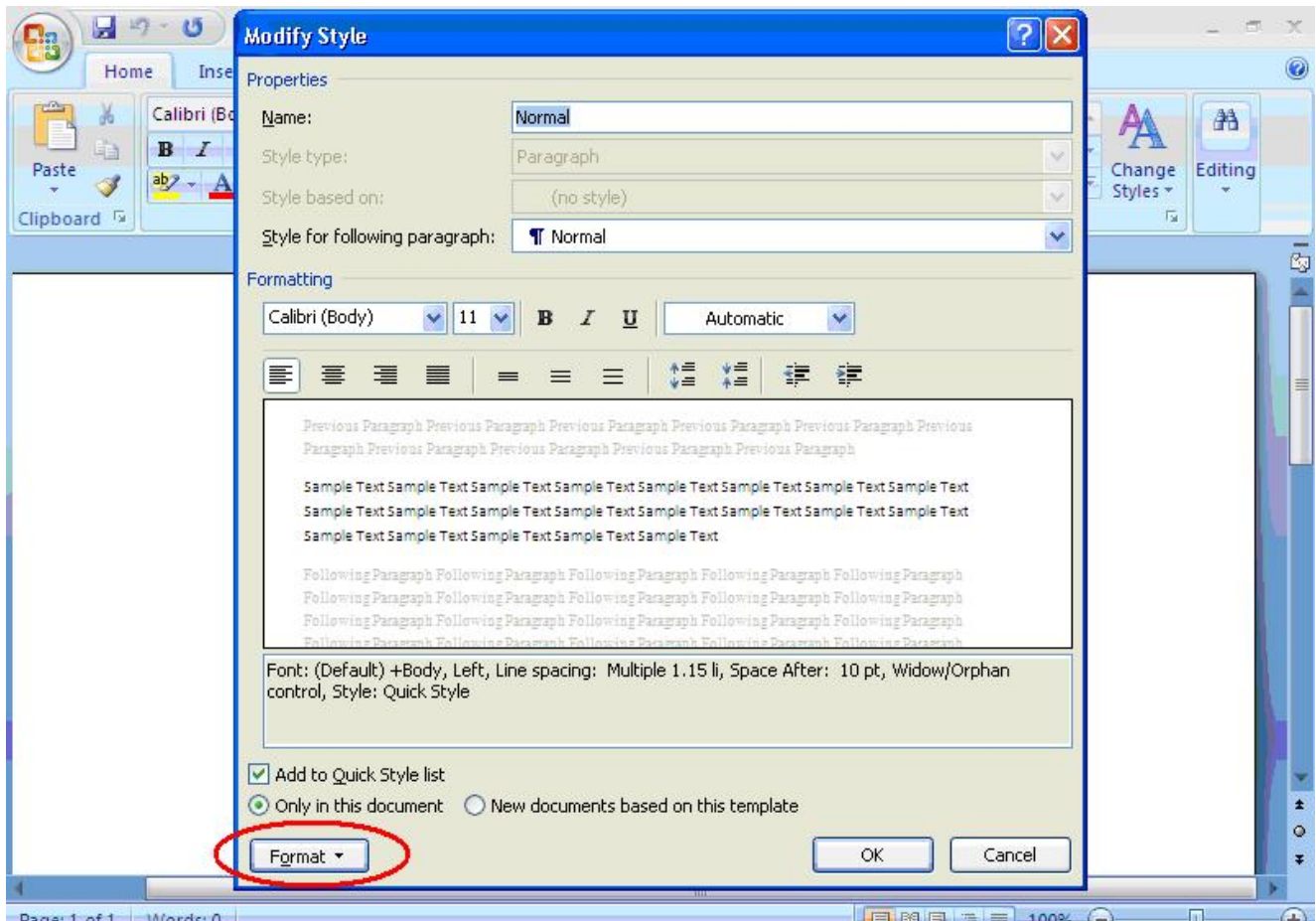
- >> Start Microsoft word (2007 or on words version)
- >> Right click on “Normal”



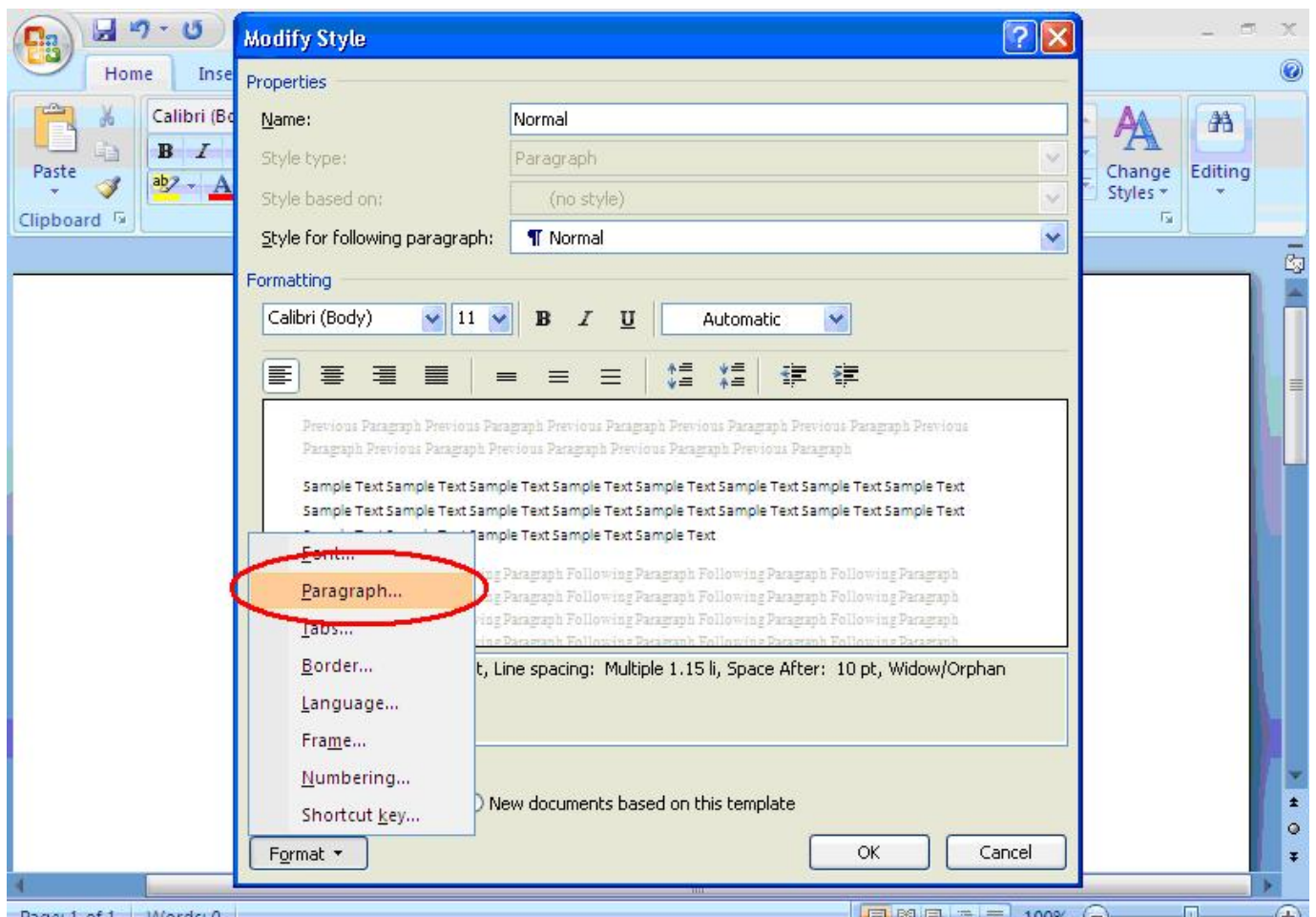
>> Select “Modify”



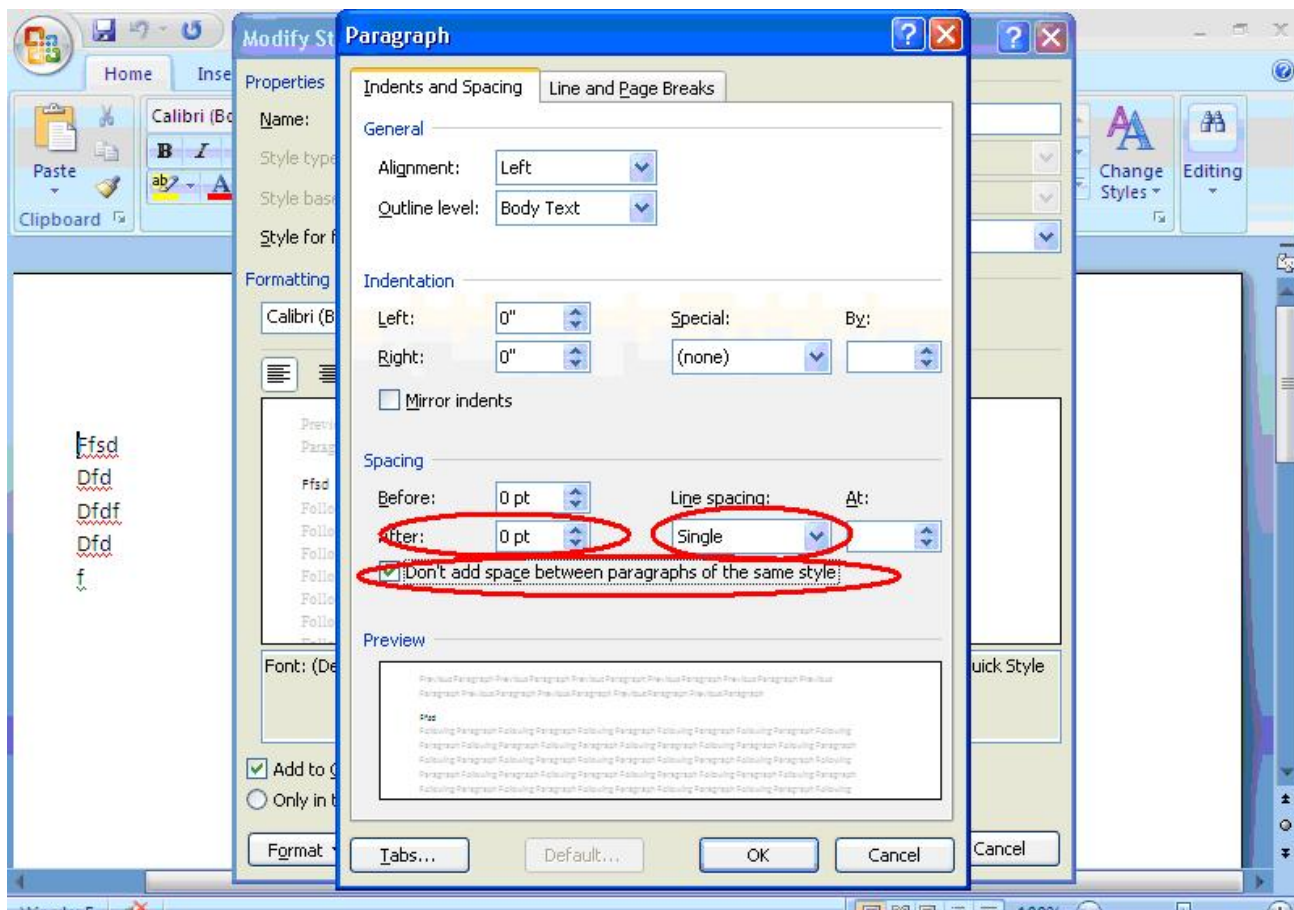
>> Select “Format”



>> Select “Paragraph”



- >> Set After to “0 pt”
- >> Set Line Spacing to “Single”
- >> Enable “Don’t add space between paragraphs of the same style”
- >> Click on ok



- >> Select “New documents based on this template.”
>> Click on ok and then save and exit from Microsoft word.
>> Above procedure user has to follow once because this modified settings will remain stored in the computer.

